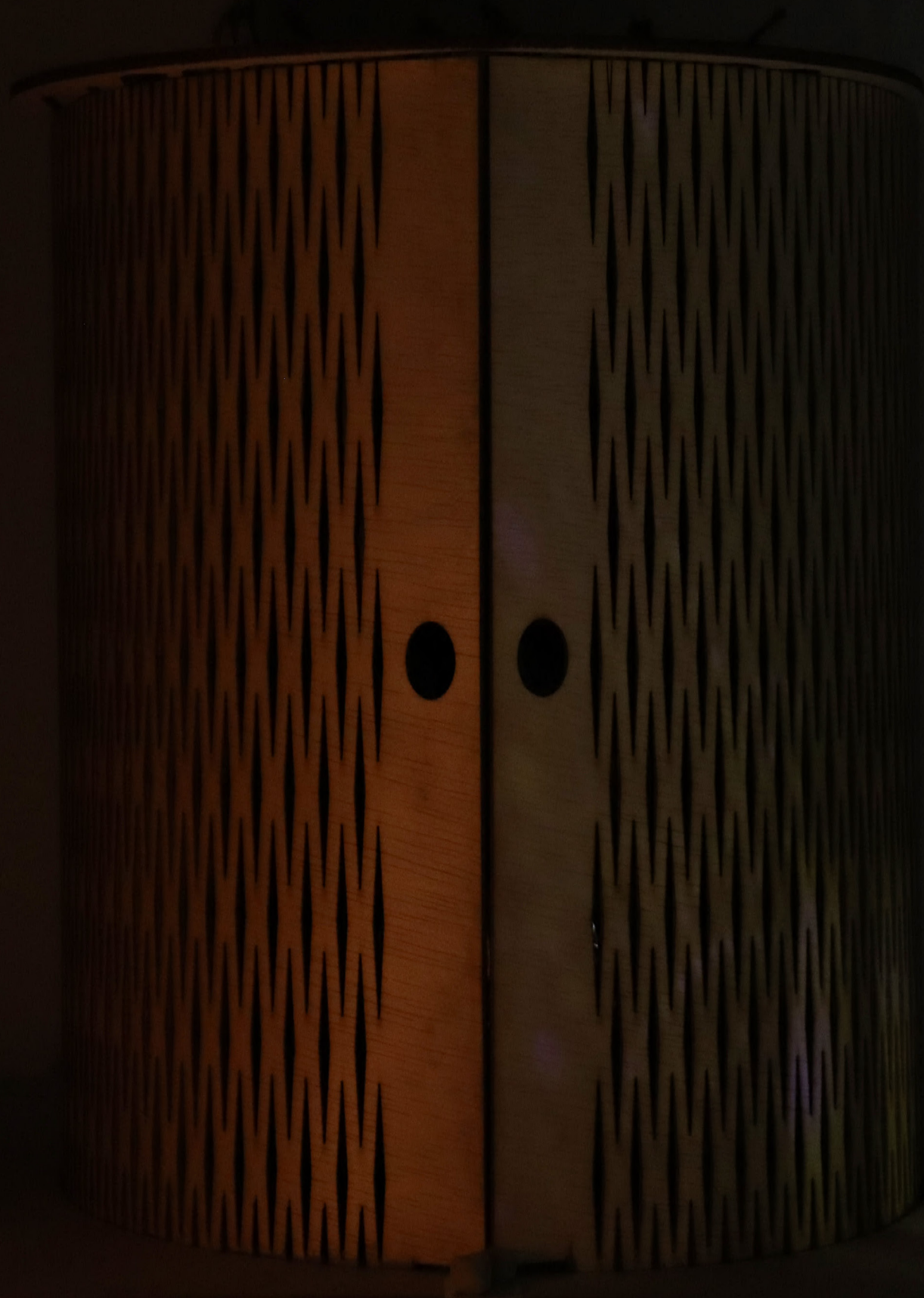


# *M.P.* PLACE

Volume 1, Issue 1 | Winter 2023

Atmosphere Documentation



*Jing Publishing*

# Contents

01

Welcome  
欢迎

02

Place Brainstorming  
头脑风暴

03

Atmosphere Layouts  
气氛设计

05

Unpacking the Archive  
档案阐述

06

Atmospheric Analysis  
气氛分析

08

Precedents  
先例

10

Pattern & Colour  
图纹与颜色

11

Pattern & Light  
灯箱

14

Prototype 1  
原型一

16

Prototype 2  
原型二

20

Final Prototype  
终极

23

Image Sequence  
图像系列

# Welcome | 欢迎

“

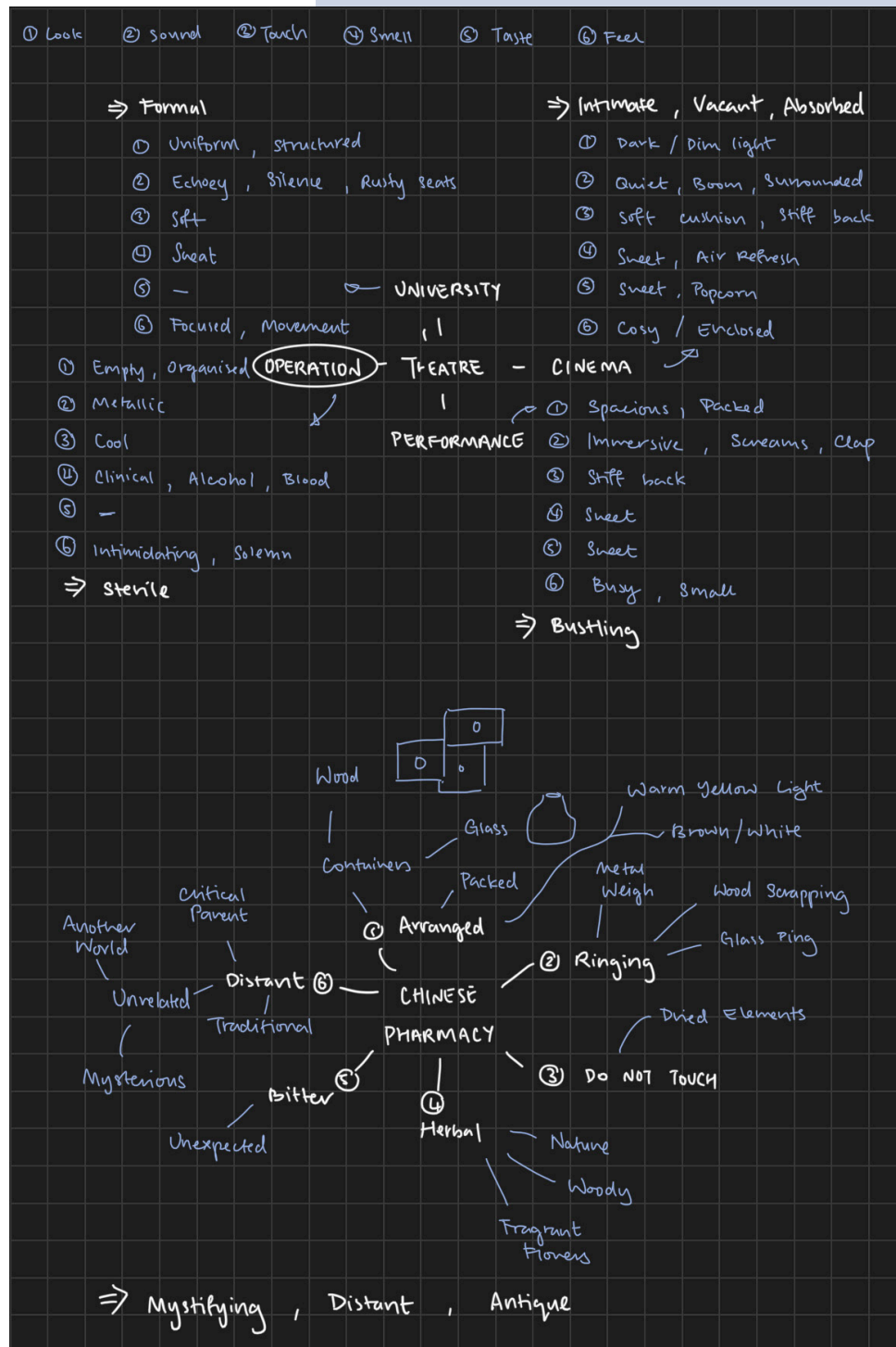
*Welcome to M.P.*

*Wonder what M.P. is? Pay attention and look out!”*

**- Yi Jing Ang**



# Place Brainstorming | 头脑风暴



## Theatre

A name for many places;  
one watches growth,  
one witnesses life and death,  
one experiences dream,  
one lives the unreal.

I chose growth, it's where I am.

## Pharmacy

A place for healing and a  
reminder of my cultural heritage  
from long ago.

I didn't choose, it attracted me.

The Theatre or The Pharmacy?





## Restless

—

*Colour | Contrast*

Some with borders, some without. All red but one.  
For now, the discoloured one found its place above.  
Until another slips in, like one thought after the next.

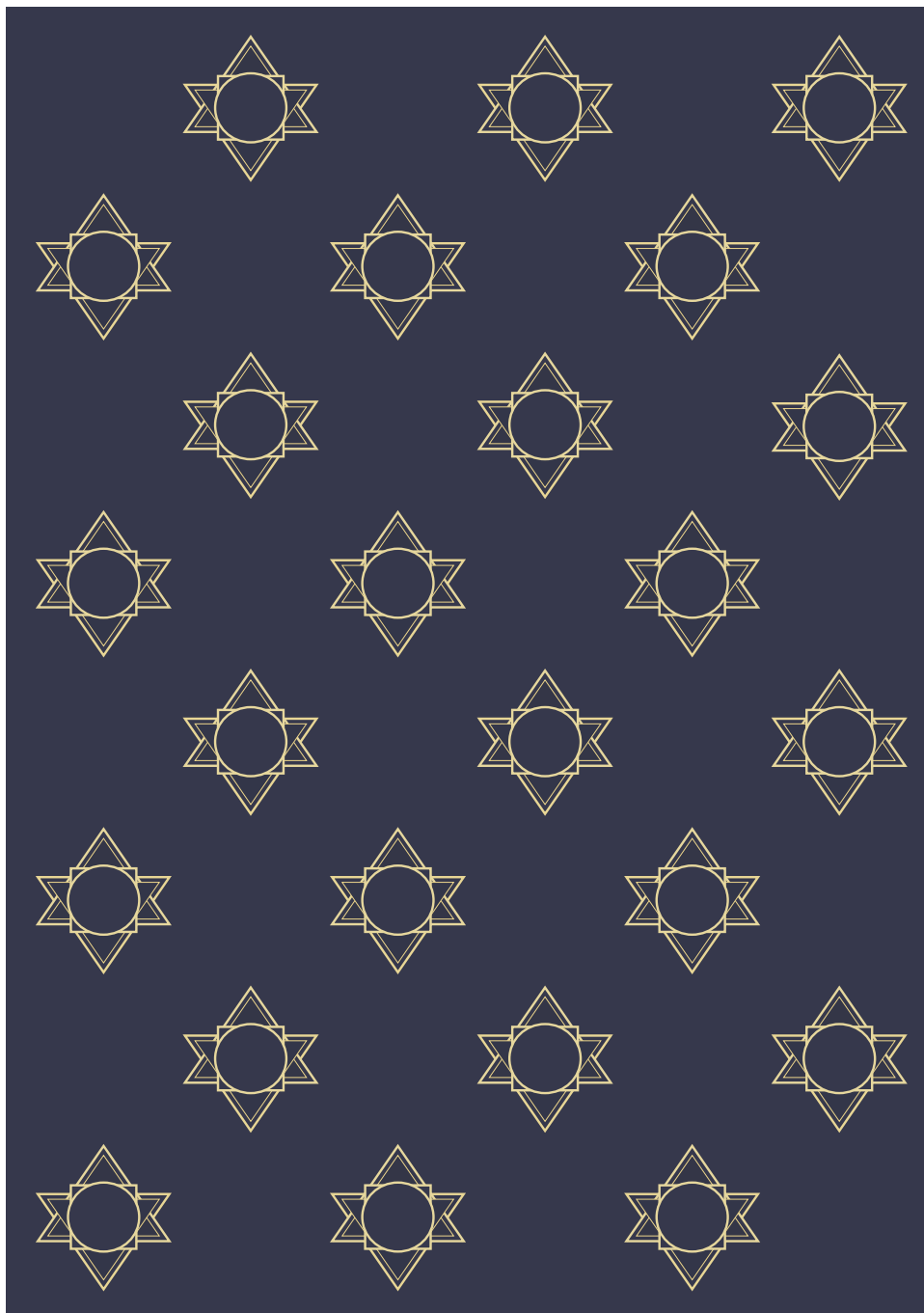
## Sparse

—

*Space*

The rectangles were,  
stretched into lines,  
aligned in parallel,  
few in number,  
and pushed to the edges.  
All to accentuate the space they didn't occupied.





## Elegance

—

*Shape | Balance | Repetition*

Find beauty in the basic shapes:  
one circle, one square, four triangles and sixteen corners.

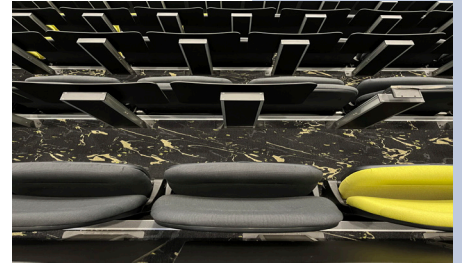
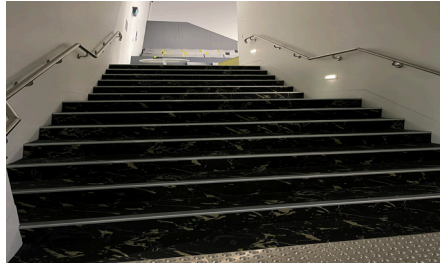


# Unpacking the Archive | 档案阐述

*Uniform.*

*An impassive place until it comes alive with people.*

## University Theatre

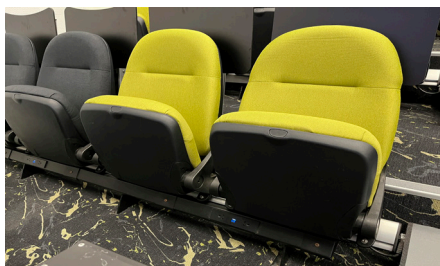


smell / taste

sweaty  
perfume  
scentless

lighting

well-lit  
projector screen  
artificial white light



materiality

textured plastic  
cool silvery metal  
soft pear green textile



sound

empty silence  
typing, pencil scratch,  
packed silence, creaking door

activity

presentation, Q&A  
lecturers and students  
walking in, mingling, note taking



# Atmospheric Analysis | 气氛分析

*Mystifying.*

*Strongest memory: smell.*

## Chinese Pharmacy

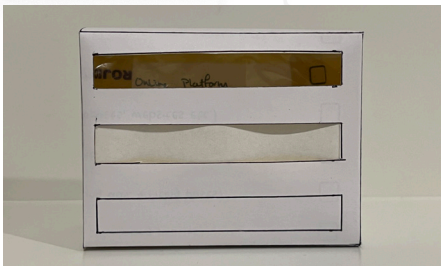
—  
at storage drawers, typically  
behind the counter/cashier to  
be prescribing process

in front of cabinet  
consultation

## Materiality | Object | Smell

—  
*Organic*

herbaceous, woody, complex, shock to system, distinct





## Scale

Reduction in height towards the centre

handheld object, small, looking up

Lighting | Temperature

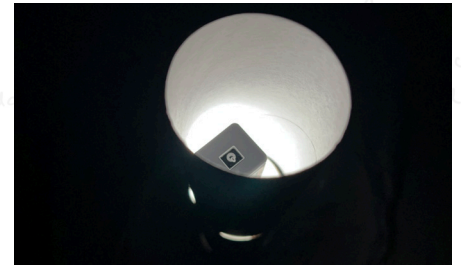
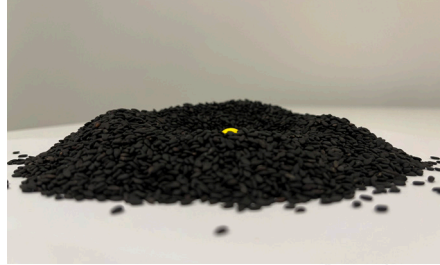
Night Characteristics

LED white light, grand golden light

## Perspective

Transition into another space

arranged in rows



DECIDED: Reduction in height of objects towards the centre of space, surrounded by tall objects





## Mystifying Atmosphere | Miniature Model

I. Enchanted, Ferdinand Ladera, 2014

II. The Martyrdom of Saint Ursula, Caravaggio, Wikimedia, 1610

III. Model of a pharmacy in Guangzhou (Canton), China, Science Museum Group, 1881-1885

IV. Nanyang Kitchen - Woodwork, Picoworm, 2017

V. Good Spring Company Limited, TOMA Miniature



Making Technique | Lighting | Fiction

VI. La Gran Ola De Kanagawa, Noelia Barreda @noebly, 2020

VII. Illuminated Valley, Hari & Deepti, 2018

VIII. White Snake – Special Jade Workshop, Jiakang Huang, Light Chaser Animation Studios, Warner Bros., Warner Bros. Pictures, 2019

IX. Spirited Away – Kamaji's Boiler Room, Titapa, 2022



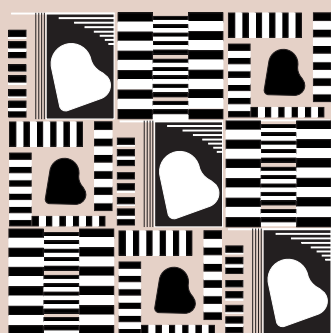
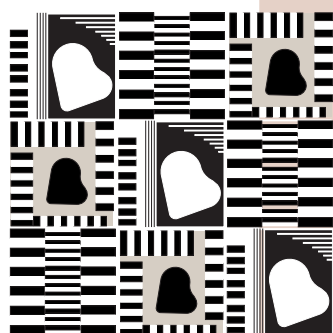


## Circularity

—

A non-random colouring process goes:  
lasso select, pick a colour, repeat.

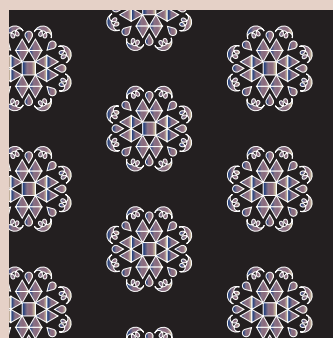
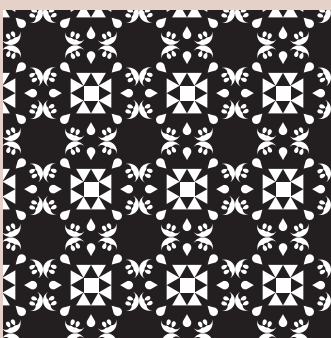
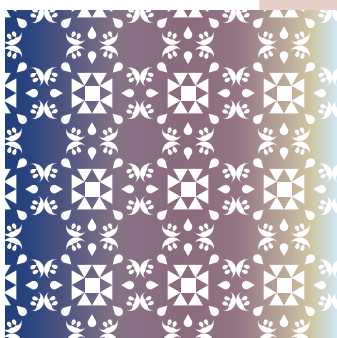
Inspired by an everyday essential,  
paper towel.



## Piano

—

Taken apart, arranged again.



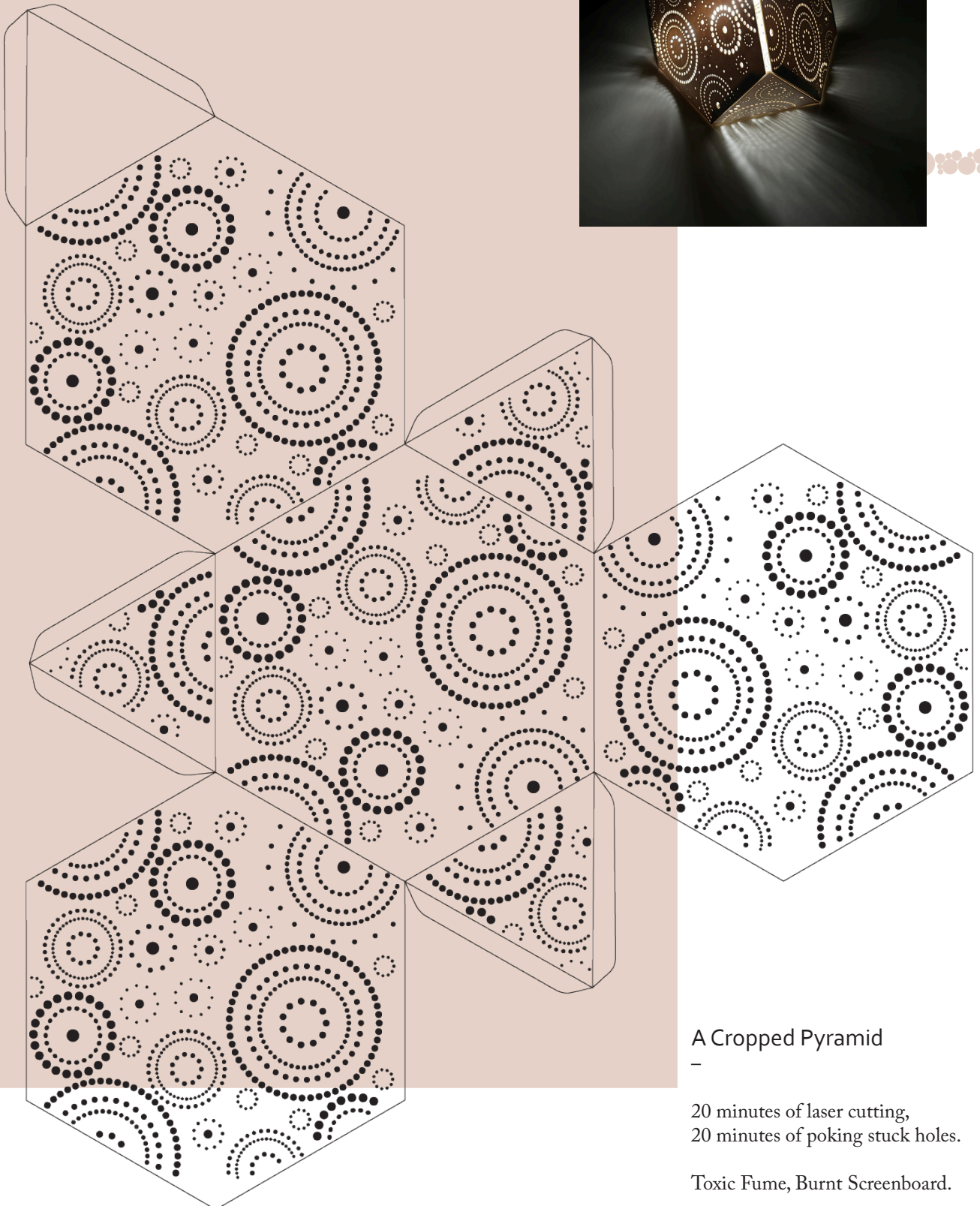
## Simple Complexity

—

An elegant continuation.

This time,  
around the centre.

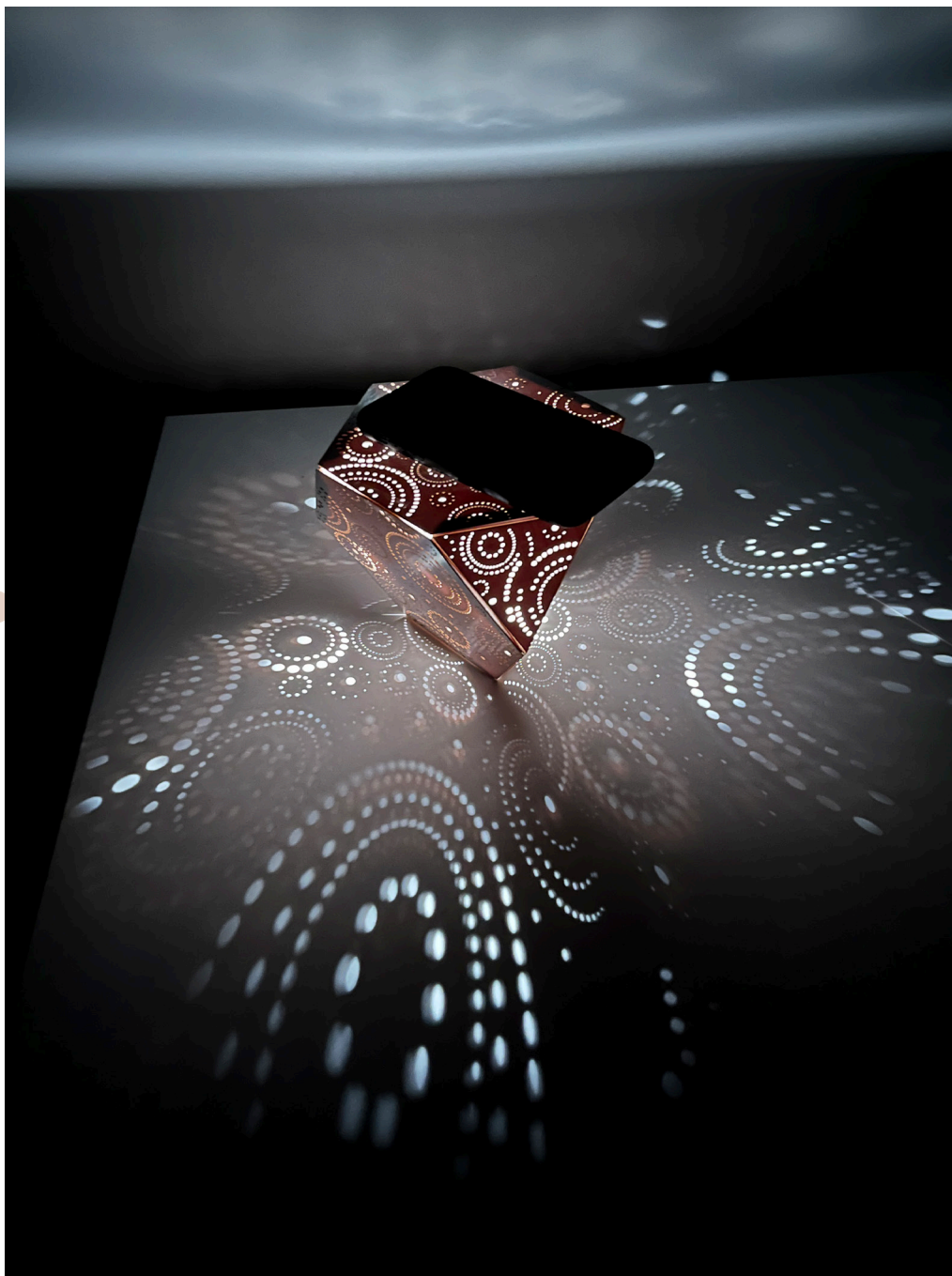




A Cropped Pyramid

20 minutes of laser cutting,  
20 minutes of poking stuck holes.

Toxic Fume, Burnt Screenboard.



## Intensity

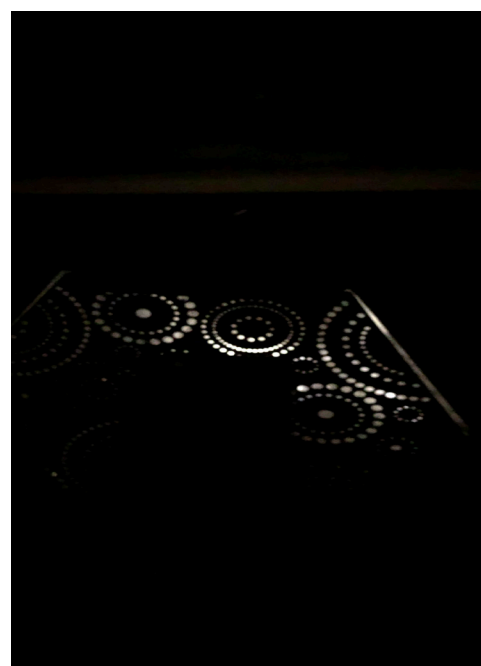
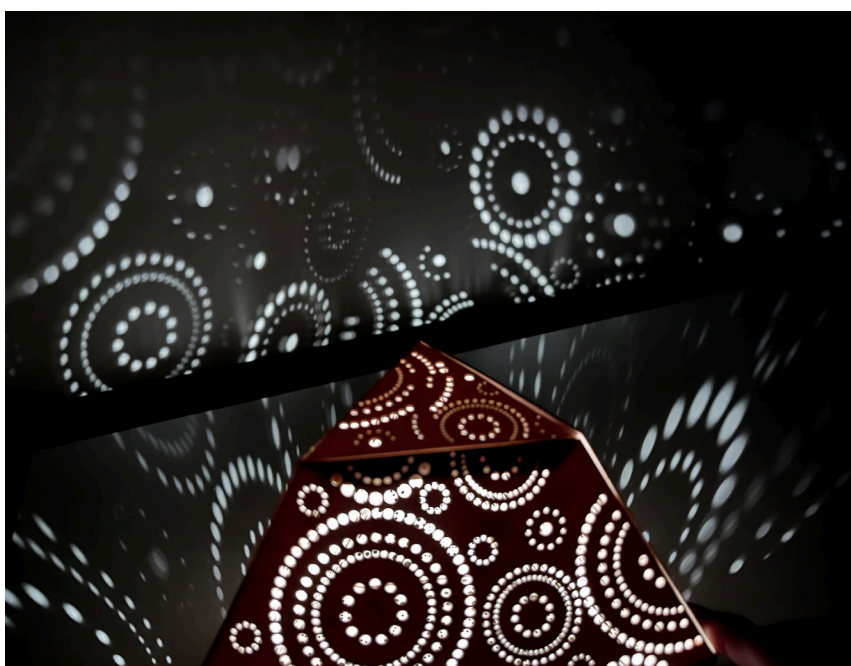
—

Level 3. Level 2. Level 1.  
Casted on a red pocket file.  
Lulling and gentle.

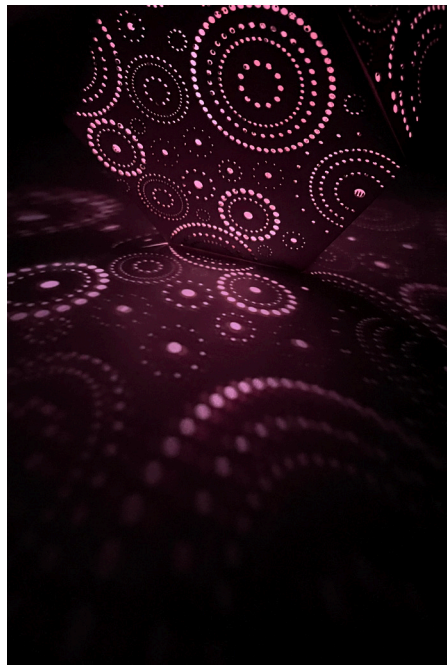
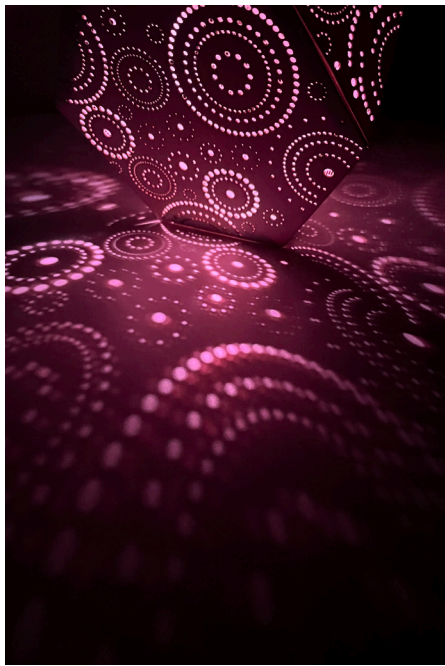
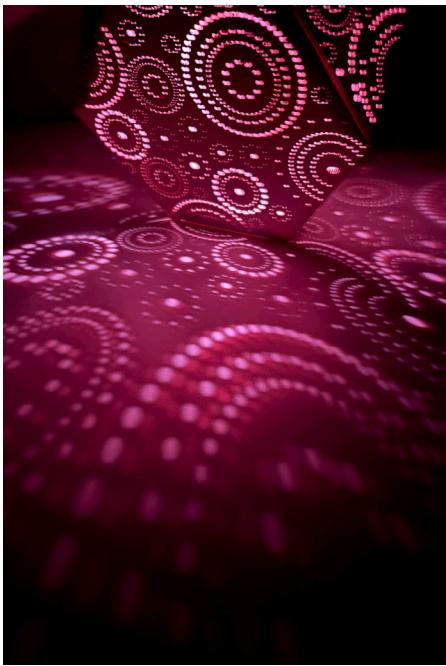
## Interaction

—

White table, white wall.  
No sun, yellow light.  
Top, side, front.

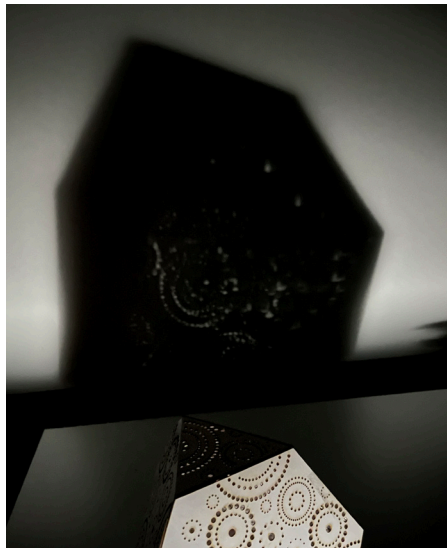
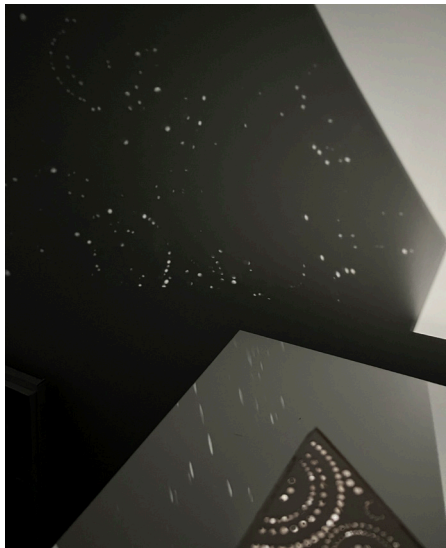
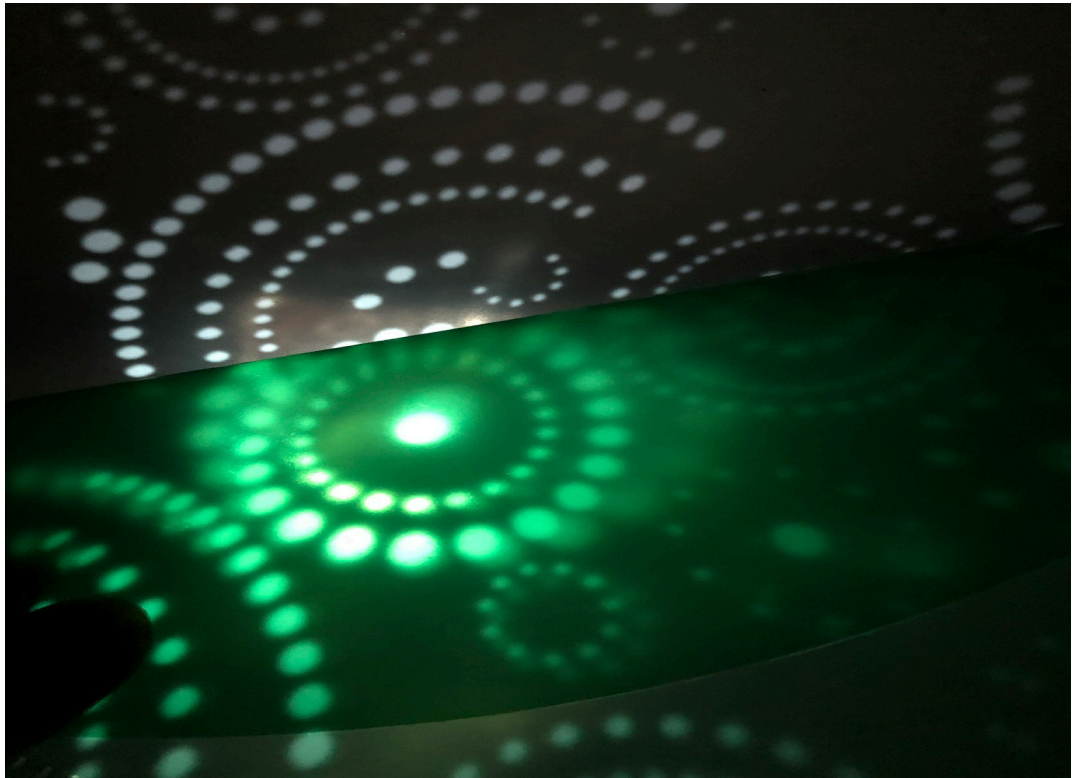






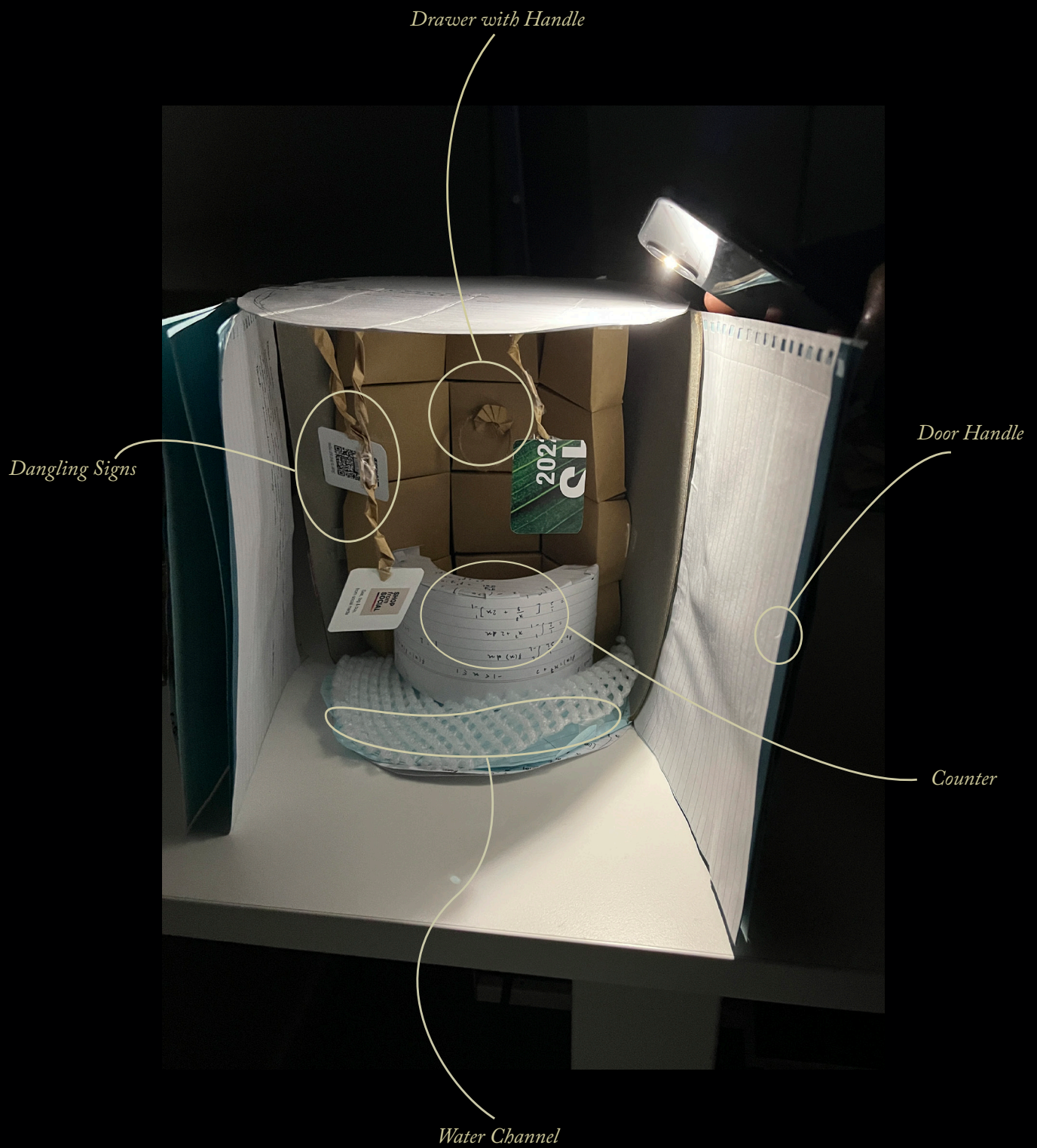
—  
On the table,  
on the carpet,  
on the wall,  
anywhere.

Cast



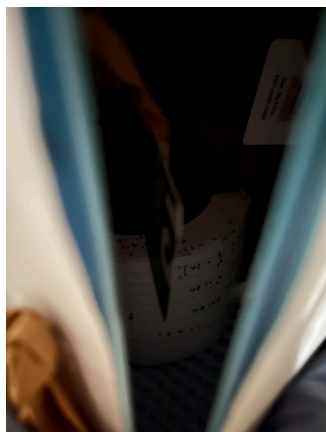


## Prototype 1 | 原型一



*Material: recycled A4 notes, recycled index card, recycled kraft paper, jute string, polyfoam net, glue stick, pva glue, tape*

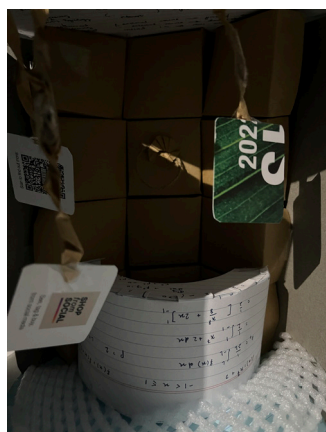
*Light and Shadow.  
The passage of flooding light.*



“

*Prototype Number 1 gave me a really good idea of what the atmosphere generated by the venue is going to look like as a model. I like the scale and the circular aesthetic generated by the prototype. I look forward to seeing the next stage of this exciting project.”*

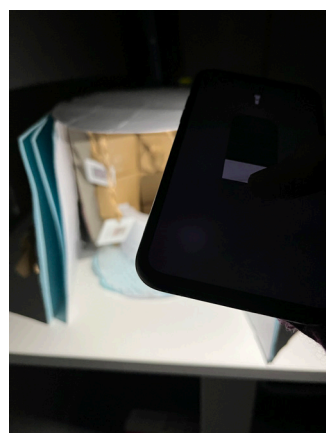
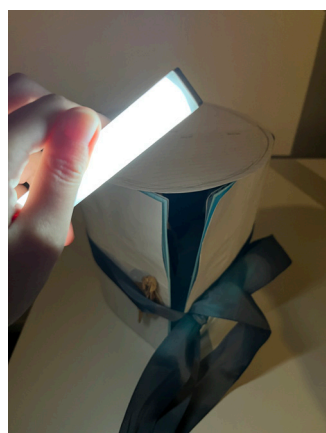
*- Ned Culic*



“

*The idea of how to simplify the drawers is interesting. From this prototype, I can see your creativity and how you construct things up, really impressive.”*

*- Daining Zhang*



## Prototype 2 | 原型二

### material selection

—

Screenboard or Poplar Plywood?  
Etch, Engrave or Cut?  
3mm or 6mm thick?



### colour swatches

—

Match the ebony:  
stained with alcohol markers,  
shined a 180°-torch,  
which colour was the best?  
99 was.



### multipurpose

—

Ceiling.  
A support,  
a light tunnel,  
a camera angle,  
a detachable cover.



### broken

—

Thin support,  
wrong kerf pattern,  
failed manipulation.  
Try again.







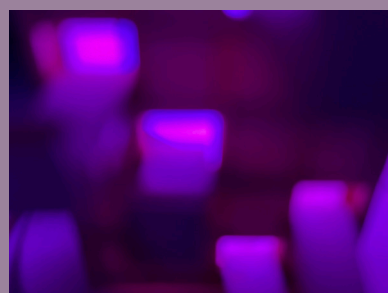
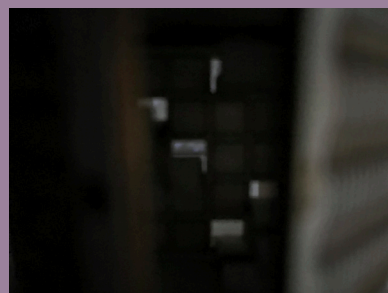
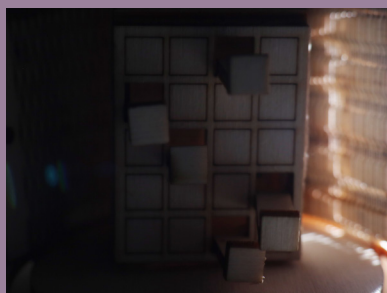
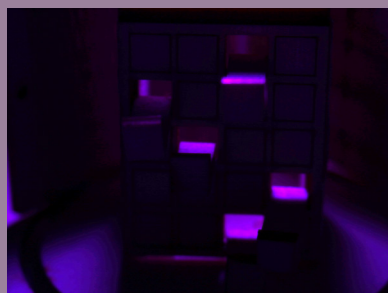
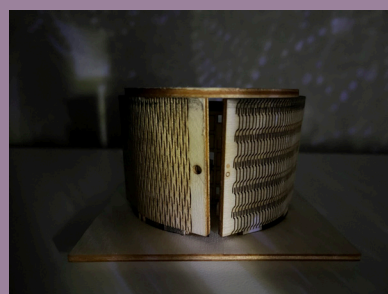
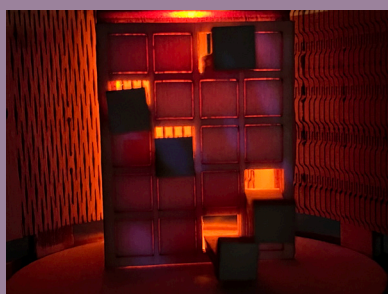
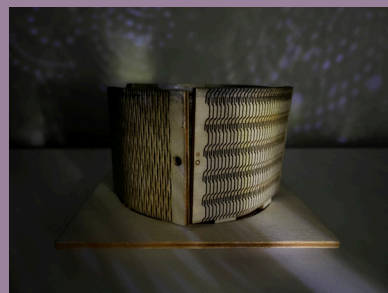
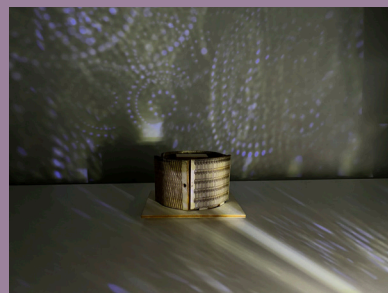
*1st round – an iPhone 13 mini*



*2nd round – a Canon EOS M50 camera*



*Perspective and Motion.*  
*Follow the light, right to left, top to bottom.*



*Torch x3 (iPhone, dimmer, night light)*

*Support*

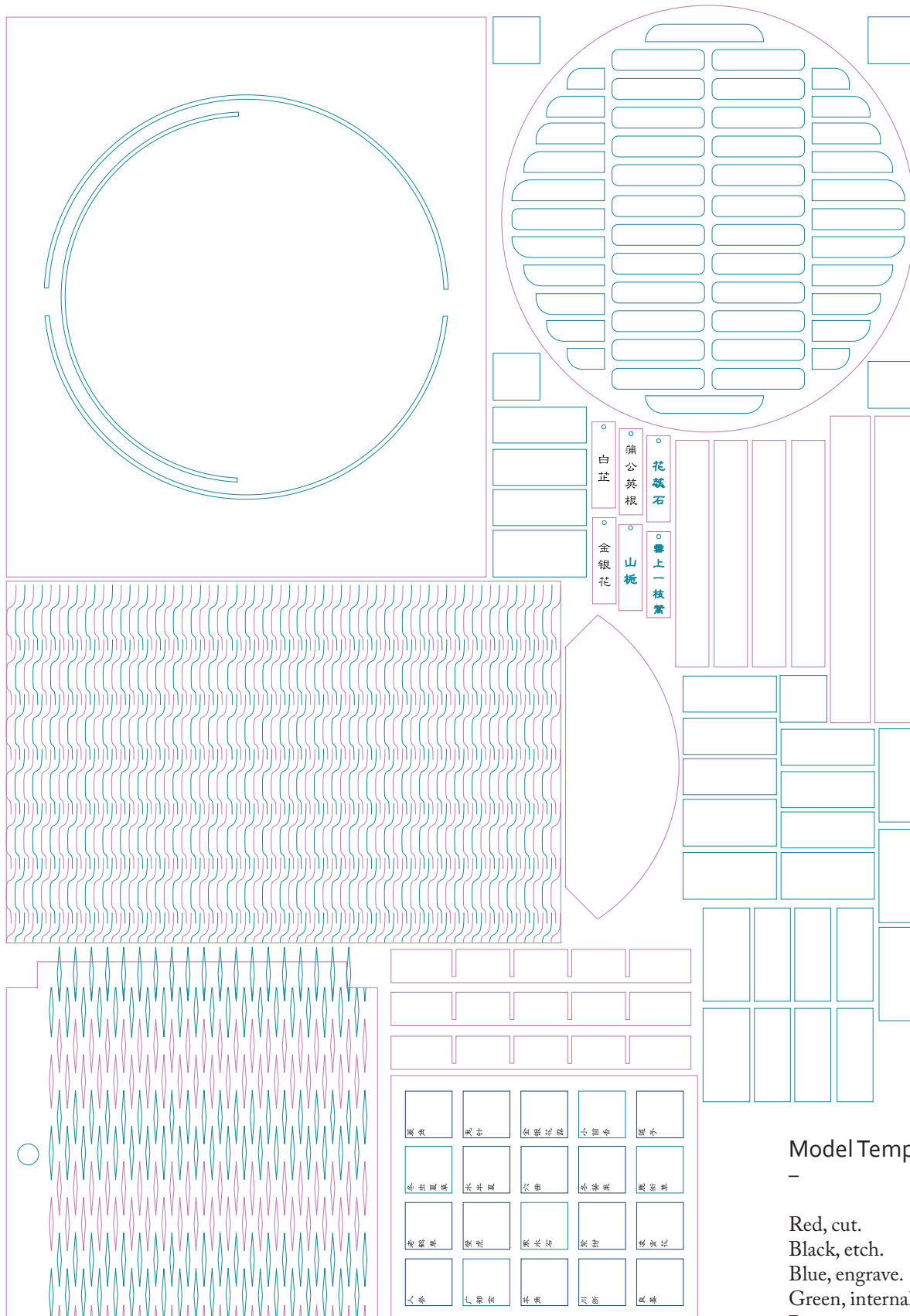


*Model*

*Background*

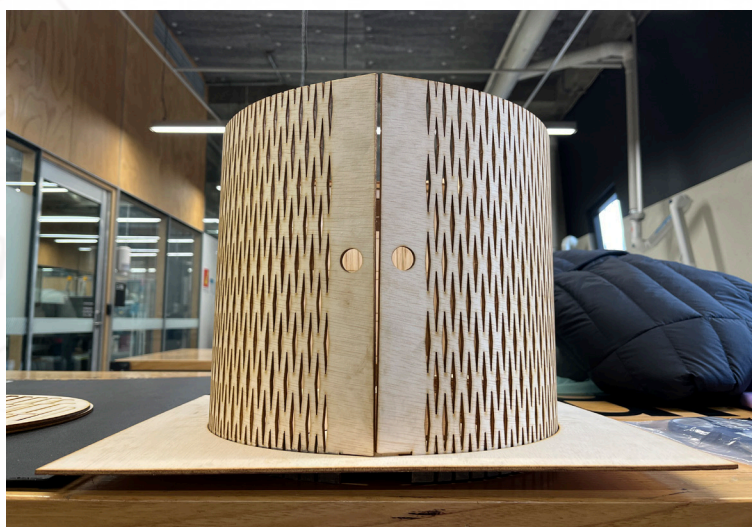
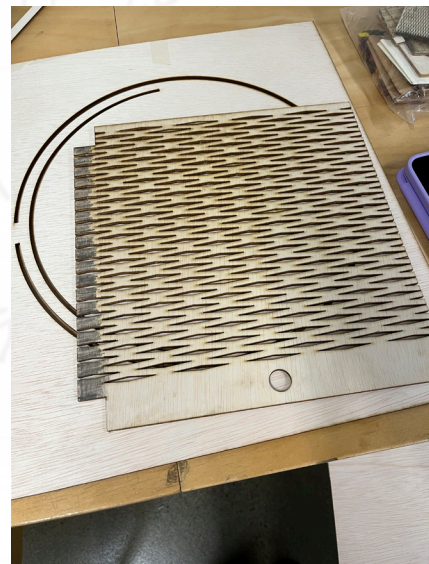
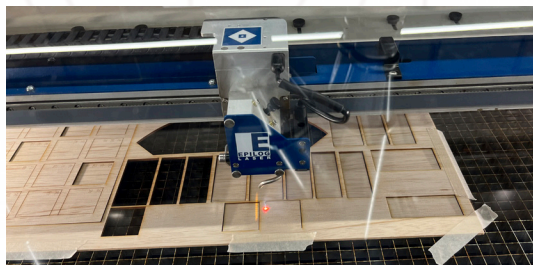
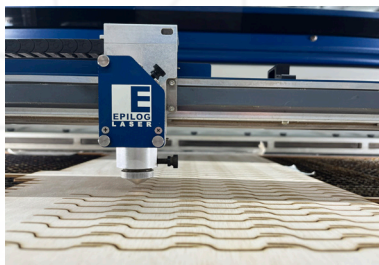
*Material: recycled poplar plywood, masking tape*

# Final Prototype | 终极





*Final refinements.  
Scaled, stained, shot.*





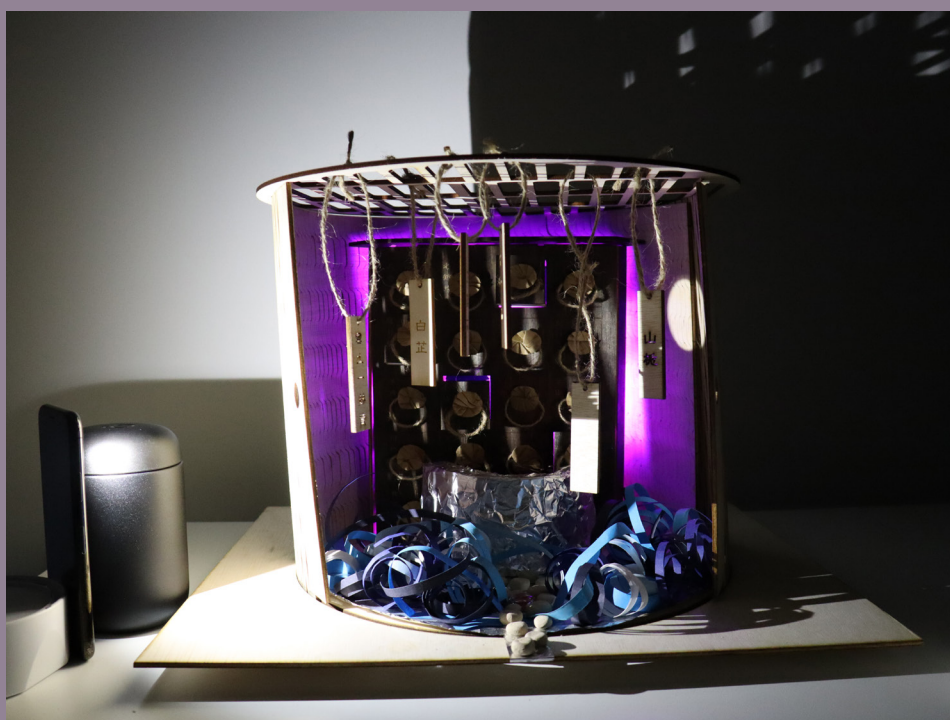
“

*The detail you have created in your sliding doors and moving drawers really encapsulate the cleverness of your model to me. They create beautiful shadows and light play while hinting at that idea of the hidden and revealed, which really builds up and shows your atmosphere. Well done!”*

*– Simone Hill*

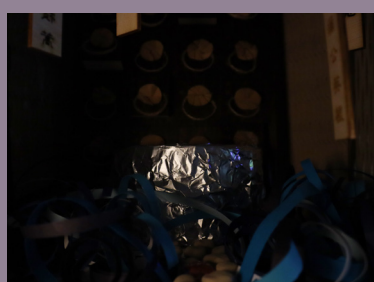
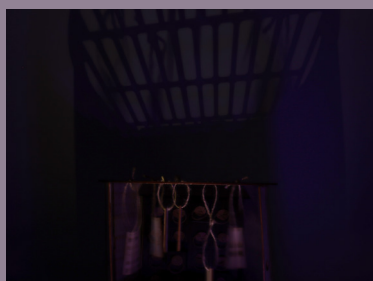
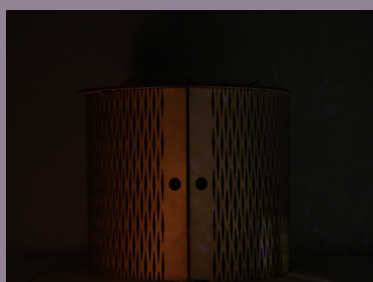
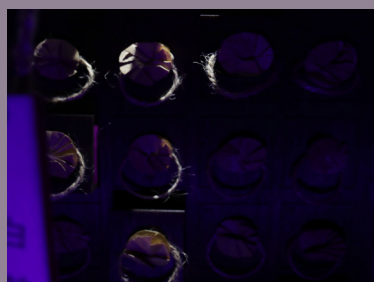
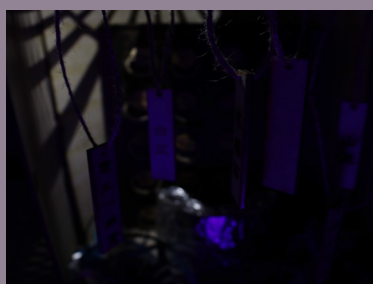
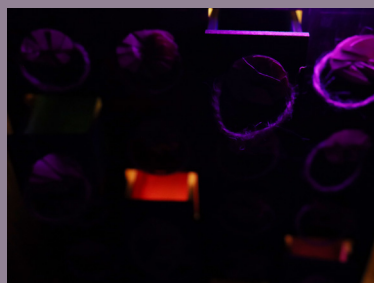


*behind-the-scene – light sources from the entrance*



*behind-the-scene – light sources from the side and hidden behind*





*Final Set-Up*



*Material: poplar plywood, kraft paper, jute string, aluminium foil, index card, air dry clay, coloured paper, Obuhu markers, tape, pva glue*





“

*Did you figure it out?*

*It's a pharmacy, a mystifying one. One that allowed me  
to wonder what living in ancient times could be like.*

*- Yi Jing Ang*

